

Product Fact Sheet

SynQor®

Überreicht durch/Presented by

RETRONIC

SINCE 1985

Retronic GmbH
Willhoop 1
D-22453 Hamburg

Phone: +49 40 589 744-0
Email: sales@retronic.de
www.retronic.de

RQ1BxxxHZ
EN 50155 Compliant
Half-brick

Rail Grade DC-DC Power Supply

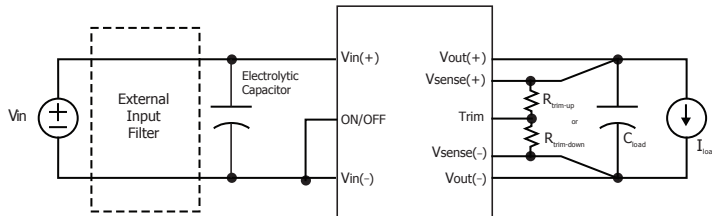
66-160 V Input Voltage	200 V Transient Input	5, 12, 15, 24, 48 Vdc Output Voltage	500 W Output Power	Up to 95% Full Load Efficiency
----------------------------------	---------------------------------	--	------------------------------	--

Operating Temperature: -40°C to +100°C

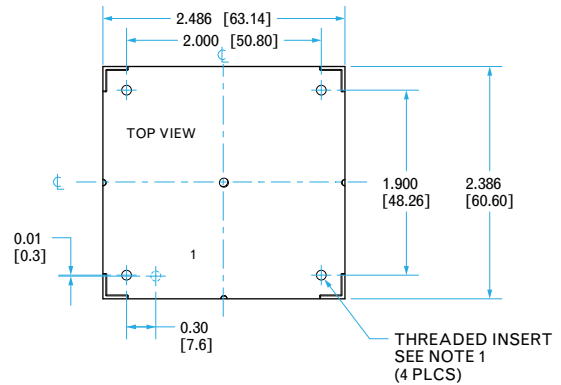


Designed and manufactured in the USA

Typical Application



Mechanical Diagram



Key Technical Attributes

- Meets requirements of standard EN 50155
- Delivers full power with minimal derating
- Fixed frequency switching provides predictable EMI
- No minimum load requirement
- Input under-voltage lockout
- Output current limit and short circuit protection
- Active back bias protection
- Output over-voltage protection
- Thermal shutdown
- On/Off control referenced to input side
- Remote sense for the output voltage
- Output voltage trim range of -20%, +10%
- Full feature option available for use of multiple converters in parallel

Safety Features

- Input-to-output isolation - 2000 Vrms
- UL 60950-1
- CAN/CSA-C22.2 No. 60950-1
- EN60950-1
- CE Marked
- EN45545-2 R24/R25 Compliant

Part Number Scheme

Datasheet Link: [RailQor 1B Datasheet](#)

Family	Input	Output	Package Size	Thermal Design	Output Current	Enable Logic	Pin Style	Feature
RQ	1B: 66-160 V, 200 V trans	050: 5 V 120: 12 V 150: 15 V 240: 24 V 480: 48 V	HZ: Half-brick Zeta	C: Encased D: Encased with Non-Threaded Baseplate V: Encased with Flanged Baseplate	70: 70 A 42: 42 A 33: 33.6 A 21: 21 A 10: 10.5 A	N: Negative	R: 0.180"	S: Standard F: Full Feature

Example: RQ1B050HZC70NRF-G